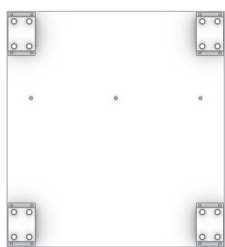
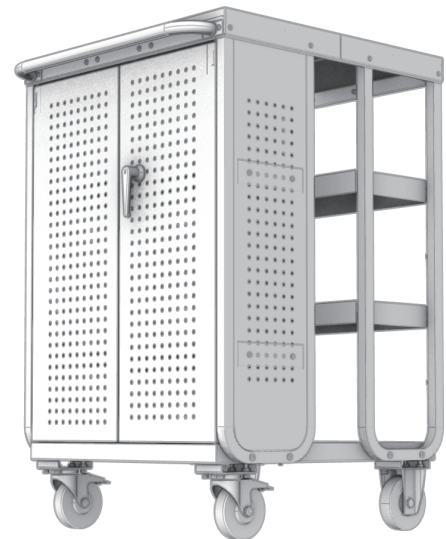


# NORTHSKY

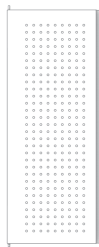
## Steel Receiving Cart w/ 4 Shelves

**M1-1180**

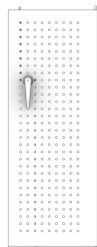
### M1-1180 Steel Receiving Cart Parts



A. Base x 1



B. Left Cabinet Door x 1



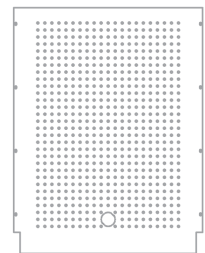
C. Right Cabinet Door x 1



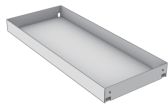
D. Cabinet Support x 2



E. Outer Support x 2



F. Cabinet Back x 1



G. Inner Cabinet Shelf x 2



H. Exterior Cabinet Shelf x 2



I. Top Shelf x 1



J. Handle



K. Rigid Caster x 2



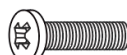
L. Swivel Caster with Brake x 2



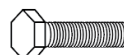
M. Short Socket Head Screw x 24



N. Short Phillips Head Screw x 19



O. Long Phillips Head Screw x 8



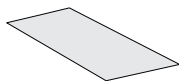
P. Hex Head Bolt x 16



Q. 5 mm Locknut x 11



R. 6 mm Locknut x 8



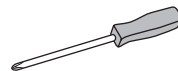
S. Shelf Mat x 6



T. Short Shelf Lip x 4



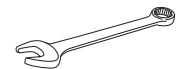
U. Long Shelf Lip x 2



Phillips Screwdriver (Tools Needed)



Allen Wrench (included)



8 mm Wrench  
10 mm Wrench  
13 mm Wrench (Tools Needed)

● **NOTE:** Do not fully tighten nuts and bolts until cart is completely assembled.

● **NOTE:** Swivel with brake casters (L) can be installed on either end of cart. It is recommended that swivel with brake casters (L) be installed at the rear of cart by the lip for cabinet doors.

# ASSEMBLY

1. Attach casters (K & L) to base (A) using 16 hex head bolts (P). (See Figure 1)

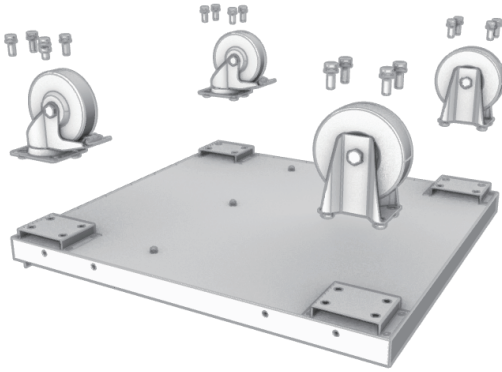


Figure 1

2. Turn the base (A) over onto its casters (K & L) and attach cabinet supports (D) to outside of base (A) using two long Phillips head screws (O) and two 6 mm locknuts (R) per cabinet support (D). (See Figure 2)

**NOTE:** End of cabinet supports (D) with four holes should face center of base (A).

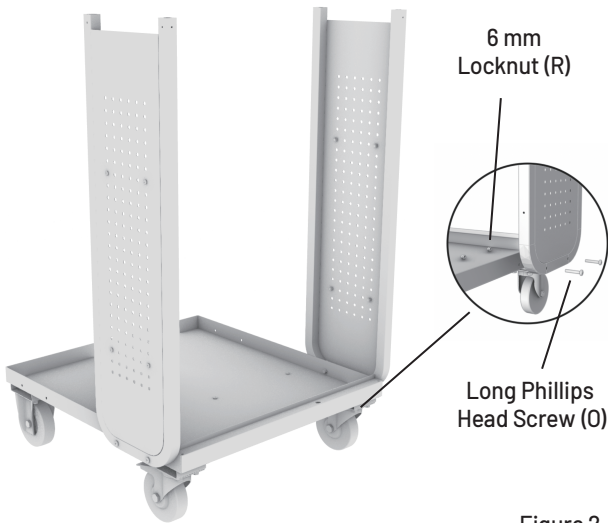


Figure 2

3. Attach cabinet back (F) to back side of cabinet supports (D) using eight short Phillips head screws (N). (See Figure 3)

**NOTE:** Lip of cabinet back (F) should be on bottom and face inside of cabinet.

Short Phillips Head Screw (N)

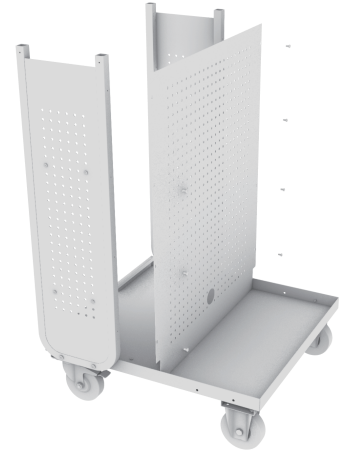
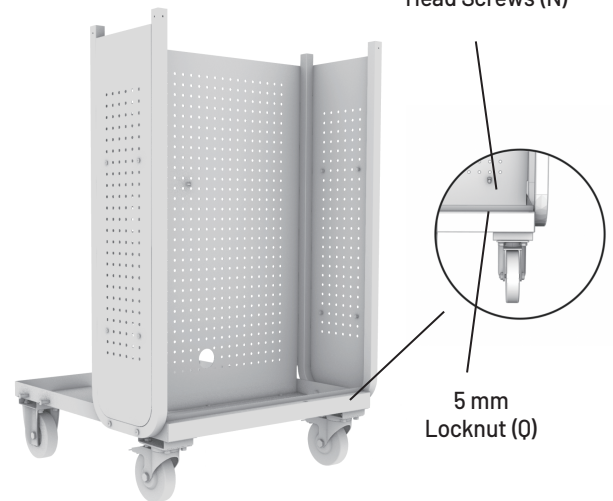


Figure 3

4. Attach bottom lip of cabinet back (F) to base (A) using three short Phillips head screws (N) and three 5 mm locknuts (Q). (See Figure 4)

Short Phillips Head Screws (N)



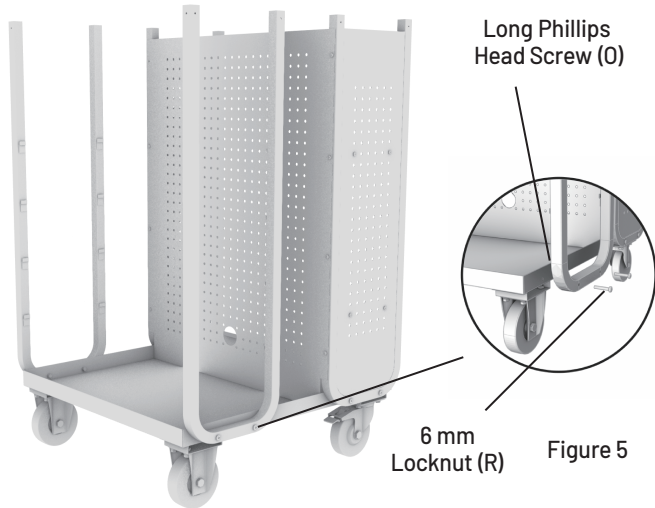
5 mm Locknut (Q)

Figure 4

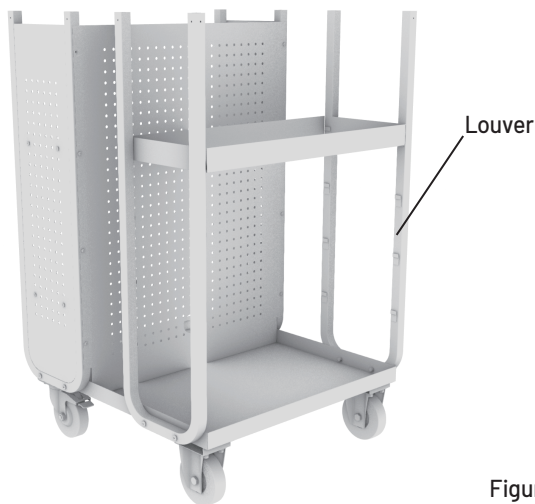
# ASSEMBLY

5. Attach outer supports (E) to outside of base (A) using two long Phillips head screws (O) and two 6 mm locknuts (R) per support. (See Figure 5)

**NOTE:** Louvers on outer supports (E) should face inside.



6. Install exterior shelves (H) to desired height on outer supports (E) by placing shelves onto outer support (E) louvers. (See Figure 6)

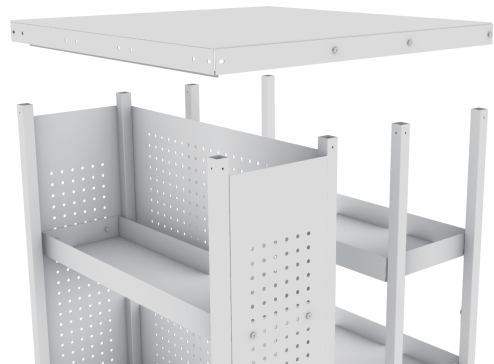


7. Install inner cabinet shelves (G) to desired height on cabinet supports (D) by inserting four short Phillips head screws (N) and four 5 mm locknuts (Q). (See Figure 7)



8. Attach top by placing over cabinet supports (D) and outer supports (E). (See Figure 8)

**NOTE:** Lip on underside of top should go on same side as cabinet supports (D).



## ASSEMBLY

9. Attach handle (J) to desired side of cart by inserting eight short socket head screws (M) through handle (J), long shelf lip (U) and top shelf (I).  
(See Figure 9)

**NOTE:** It is recommended to put handle (J) on cabinet side of cart.

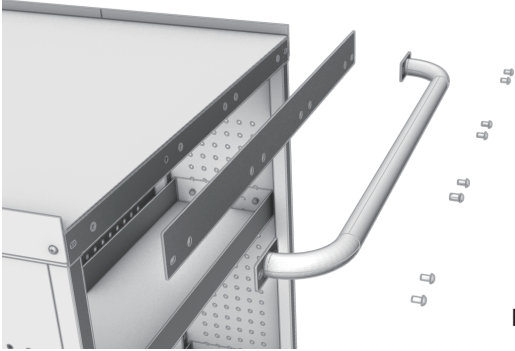


Figure 9

10. Attach short shelf lip (T) to both sides of cart using two short socket head screws (M) per shelf lip.  
(See Figure 10)

**NOTE:** For a full lip on the top shelf (I), attach two short shelf lips (T) and one long shelf lip (U) using 12 short socket head screws (M).

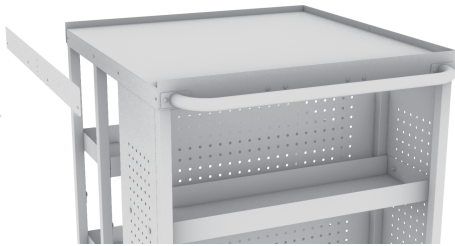


Figure 10

11. Insert six short socket head screws (M) into remaining bolt holes on the top.

12. Insert left cabinet door (B) and right cabinet door (C) by placing bottom of hinge in base (A) lip. Pull top spring hinge down to align door with top and release hinge to attach door to top.  
(See Figure 11)

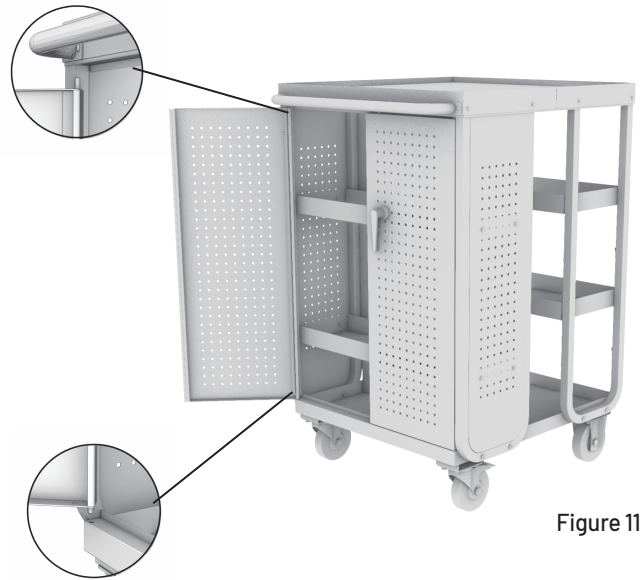


Figure 11

13. Place shelf mats (S) in shelves and tighten all nuts and screws.

# NORTHSKY

Mfd for NorthSky Supply Inc.

The Woodlands, TX 77380

[www.northskysupply.com](http://www.northskysupply.com)

1-800-805-6686

MADE IN CHINA